



ARROWSTREET

LINCOLN-ELIOT ELEMENTARY SCHOOL

DESIGN REVIEW COMMITTEE MEETING

NEWTON, MA
12 OCTOBER 2022

PREPARED FOR



David Fleishman,
Superintendent



Ruthanne Fuller,
Mayor



AGENDA /

1 SITE DESIGN UPDATE

- » LANDSCAPE DESIGN
- » STORMWATER UPDATE

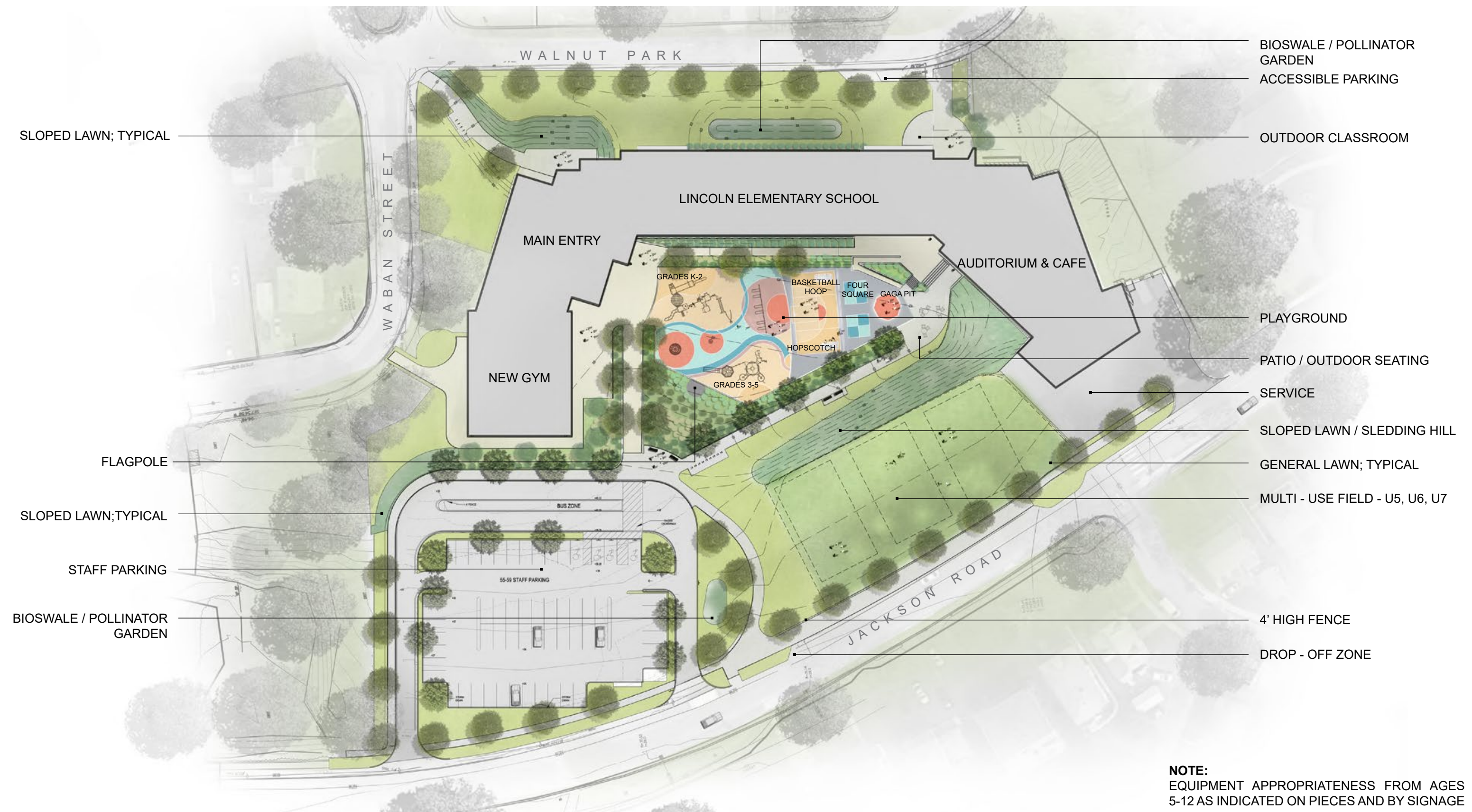
2 BUILDING DESIGN UPDATE

- » INTERIOR DESIGN CONCEPT
- » EXTERIOR DESIGN

3 BUILDING PERFORMANCE

- » LEED SCORE CARD UPDATE

LANDSCAPE

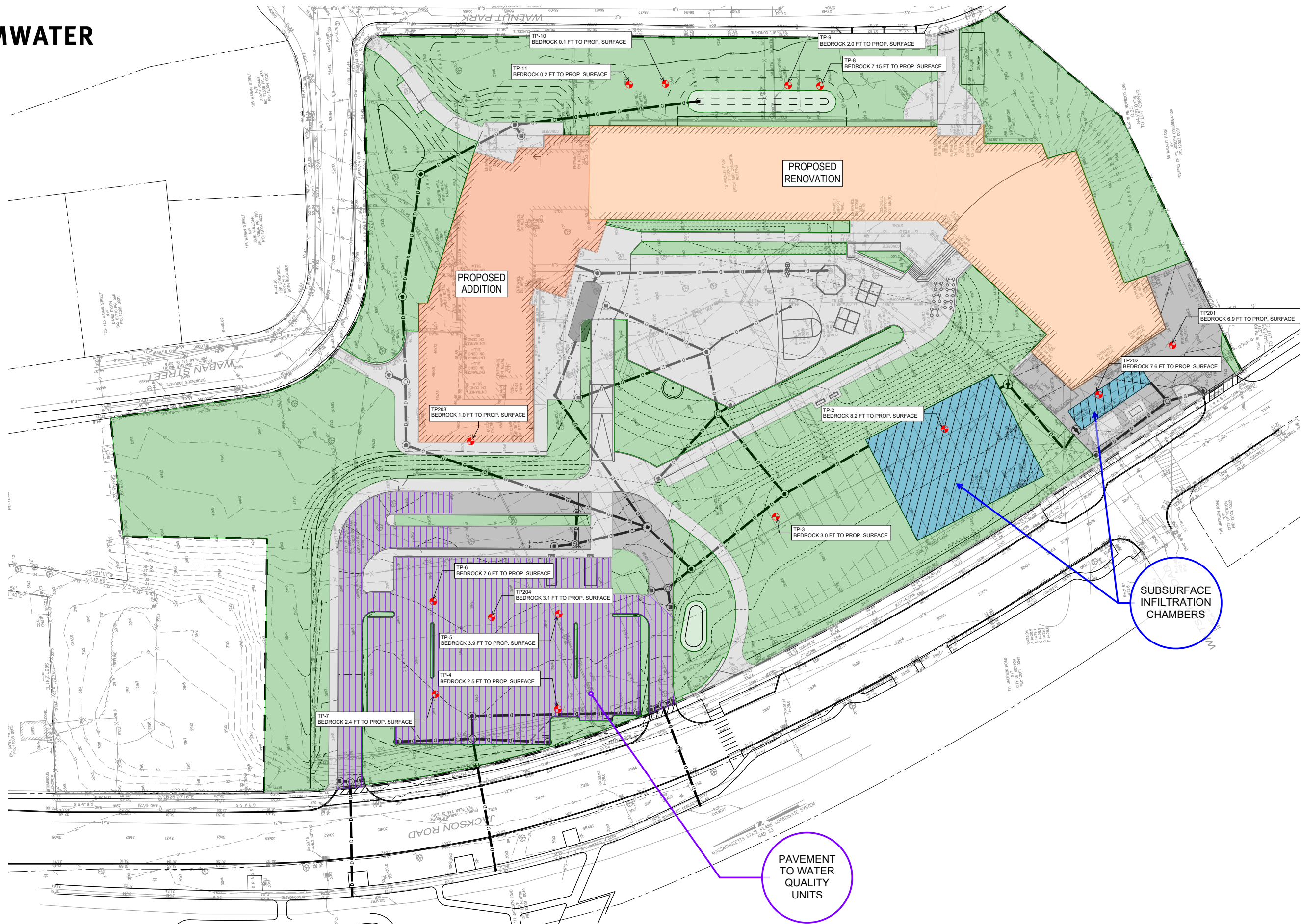


NOTE:
EQUIPMENT APPROPRIATENESS FROM AGES
5-12 AS INDICATED ON PIECES AND BY SIGNAGE



STORMWATER

STORMWATER



INTERIOR DESIGN

MISSION STATEMENT /

EACH CHILD IS ENCOURAGED BY THE STAFF TO DO HIS OR HER BEST ACADEMICALLY AND TO DEVELOP SELF-ESTEEM AND INDEPENDENCE. BOTH AT HOME AND AT SCHOOL STUDENTS ARE ASKED TO FOLLOW THE FOUR CORE VALUES OF THE SCHOOL:

- 1 RESPECT AND APPRECIATE THEMSELVES, HUMAN DIFFERENCES, THE COMMUNITY AND THE ENVIRONMENT.**
- 2 STRIVE FOR ACADEMIC EXCELLENCE THROUGH RISK TAKING AND CONSISTENT EFFORT.**
- 3 DEVELOP AN ENTHUSIASM FOR LIFELONG LEARNING.**
- 4 ASSUME RESPONSIBILITY FOR ONE'S OWN ACTIONS.**

INTERIOR DESIGN CONCEPTS

INTERIOR DESIGN CONCEPTS

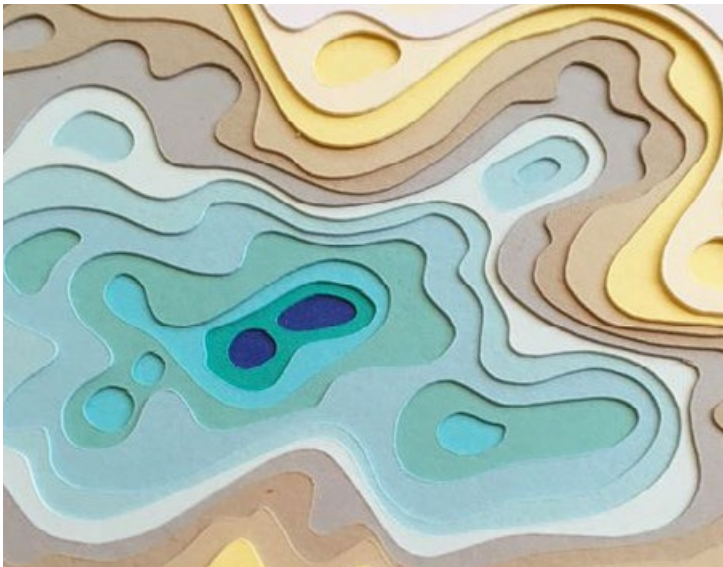
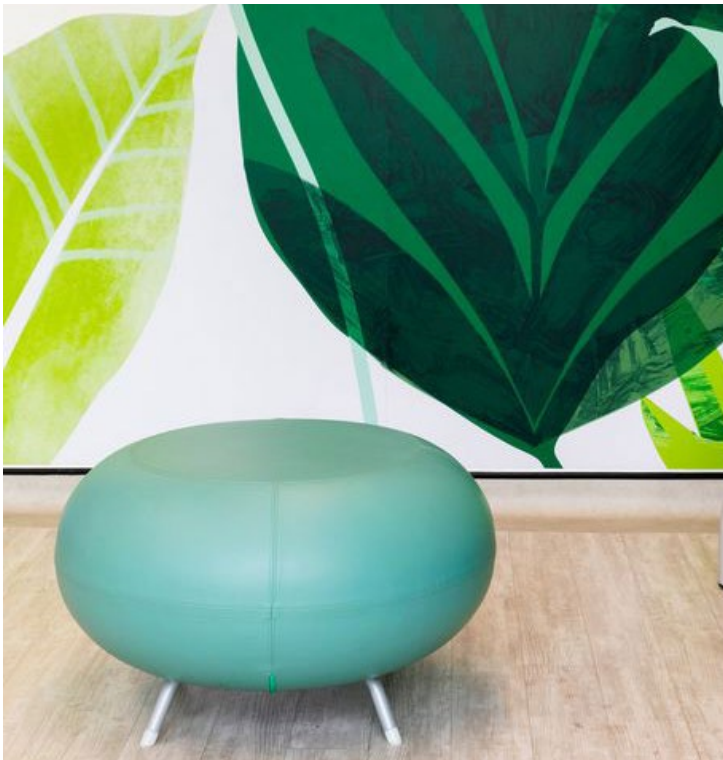


CONNECTION OF THE GLOBE - WORLD TOPOGRAPHY

We are all together on one globe from the deepest of the sea or the highest of the mountain. No matter where you come from, you have a special place representing you at Lincoln-Eliot.

The interior design concept is influenced from the global student body at Lincoln-Eliot. Students will not only understand their mission statement of appreciating the community and environment, but will be surrounded by beautiful abstract designs of different landscapes.

The colors represent the calming nature of the blue sea, and the energetic and cheerful yellow sun. Students will not only be learning about different parts of the world in the classroom, but finding inspiration in the floor, wall and furniture forms.



INTERIOR DESIGN
COLOR WAYFINDING



3RD GRADE
FOREST



KINDERGARTEN
BACKYARD



4TH GRADE
JUNGLE



1ST GRADE
RIVERS



5TH GRADE
OCEAN



2ND GRADE
MOUNTAINS



INTERIOR DESIGN CONCEPTS



MOMENTS OF REFLECTION

When students recognize their emotions, they may need space to reflect and understand themselves in order to take responsibility. Learning to step away to focus or collect oneself is a habit that will benefit them throughout their life.

The windows connect the interior spaces with the outdoor nature life of rain, snow, or a sunny day. In hallways, students will find spaces to collect and have a quiet moment. Through the Social Emotional Learning programs, indoor and outdoor experiences will help students understand their natural and human communities. The topics they are learning in the classroom can be applied and shown first-hand, which has shown to help many students focus.



INTERIOR DESIGN CONCEPTS



SELF EXPRESSION THROUGH LANGUAGE

The interior concept is inspired by the paper mill developed in 1778. A piece of paper represents a blank canvas for art, a book, or a new idea. Language as a form of art will inspire students as they walk through the halls understanding other communities languages as well as the power of their own voice.

Self-expression is crucial for developing a child’s identity, self-confidence, and sense of belonging. Self-Expression can open a child’s mind and allow them to form their ideas and thoughts while positively expressing their feelings. Students will be able to show their interests, culture, and experiences in ways that make them feel inspired. When the class graduates, a new student body will be able to express themselves and feel their imprint on the school.



ENVIRONMENTAL GRAPHICS

ENVIRONMENTAL GRAPHICS
ARROWSTREET SCHOOL PROJECT

KING OPEN ELEMENTARY SCHOOL
CAMBRIDGE, MA



ENVIRONMENTAL GRAPHICS
ARROWSTREET SCHOOL PROJECT

HILDRETH ELEMENTARY SCHOOL
HARVARD, MA



INTERIOR MATERIALS

BUILDING DESIGN UPDATE

INTERIOR MATERIALS



CORE EDUCATIONAL SPACES

Classrooms & Small Group Rooms

- Floor: Resilient Tile
- Walls: Painted
- Ceiling: Acoustical Ceiling Tile

Art Room

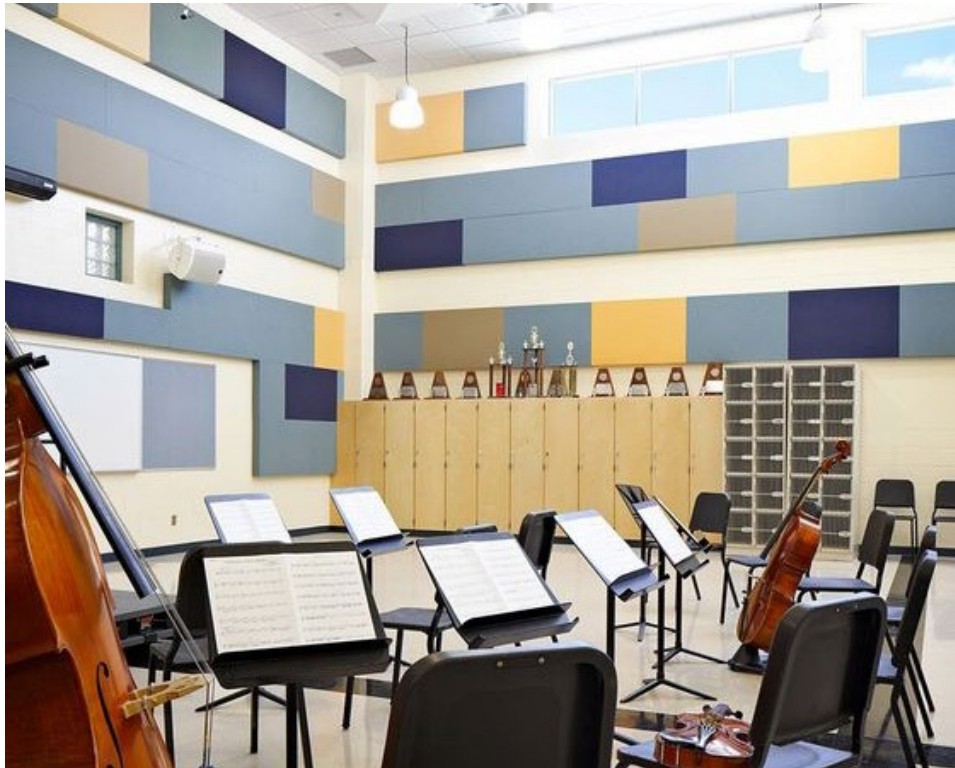
- Floor: Resilient Tile
- Walls: Tackable Wall Panels & Painted
- Ceiling: Acoustical Ceiling Tile

Music Room

- Floor: Resilient Tile
- Walls: Tackable Wall Panels & Painted
- Ceiling: Acoustical Ceiling Tile

Teacher Work Rooms

- Floor: Resilient Tile
- Walls: Painted
- Ceiling: Acoustical Ceiling Tile



BUILDING DESIGN UPDATE

INTERIOR MATERIALS



COMMON AREAS

Media Center

- Floor: Carpet Tile
- Walls: Acoustical Wall Panels & Painted
- Ceiling: Exposed & Acoustical Clouds

Kitchen

- Floor: Existing Quarry Tile
- Walls: Existing Tile Walls
- Ceiling: Cleanable Lay-In Grid Ceiling

Gymnasium

- Floor: Wood Athletic Flooring
- Walls: Pads, Acoustrical Panels & Painted
- Ceiling: Exposed

Restrooms

- Floor: Expoxy Flooring
- Walls: Fiberglass Reinforced Panel Walls
- Ceiling: Acoustical Ceiling Tile

Cafeteria

- Floor: Resilient Tile
- Walls: Existing Wood Panels & Painted
- Ceiling: Acoustical Ceiling Tile

Back of House

- Floor: Sealed Concrete
- Walls: Fiberglass Reinforced Panel & Painted Walls
- Ceiling: Exposed

Auditorium

- Floor: Carpet and Painted Concrete
- Walls: Existing Wood Panels & Painted
- Ceiling: Acoustical Ceiling Tile and Acoustical Panel

EXTERIOR DESIGN

BUILDING EXTERIOR
EXISTING



150 JACKSON ROAD



CLASSROOM FACADE



EXISTING BRICK



CAFETERIA / AUDITORIUM / MECHANICAL & STORAGE

BUILDING EXTERIOR
EXISTING



CHAPEL ENTRANCE



15 WALNUT PARK ENTRANCE



WALNUT PARK CLASSROOM FACADE



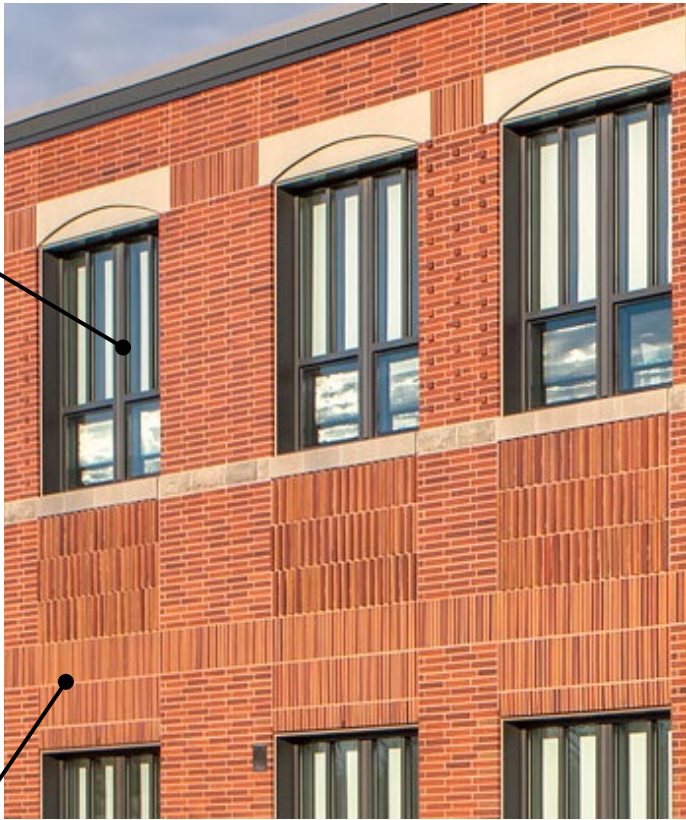
CHAPEL /& CONVENT - VIEW FROM WABAN STREET

BUILDING EXTERIOR STUDIES
NEW GYM AT WABAN STREET

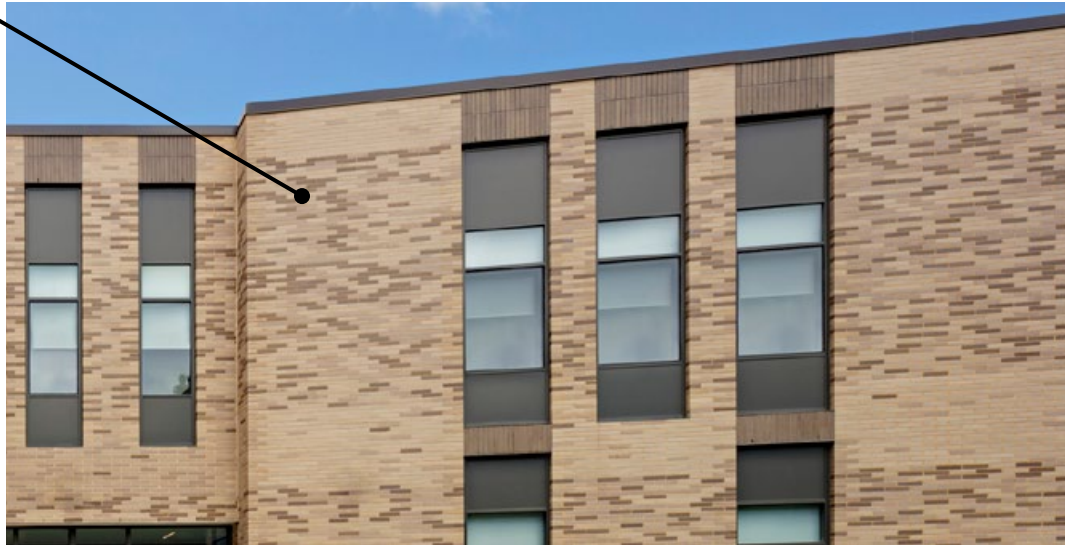


BUILDING EXTERIOR STUDIES
MATERIALS

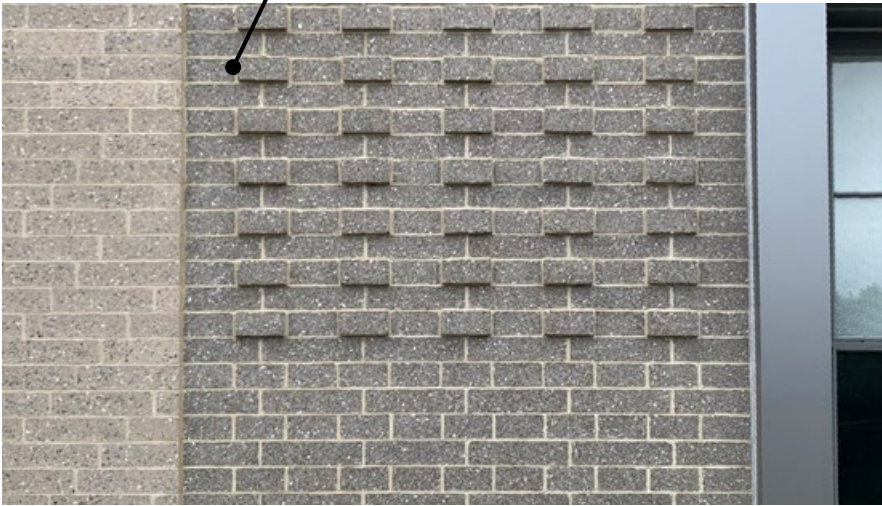
**ALUM. FRAME
WINDOWS &
STOREFRONTS**



BRICK
2 1/4" X 11 5/8"
2 1/4" X 7 5/8"



GROUND FACE CMU
4" X 16" AND 4" X 8" NOM.



**KALWALL
WALL SYSTEM**



SPLIT FACE CMU
8" X 16" NOM.



BUILDING EXTERIOR STUDIES
VIEW FROM JACKSON ROAD



BUILDING EXTERIOR STUDIES

VIEW FROM WALKWAY TOWARDS NEW ENTRY PLAZA



BUILDING EXTERIOR STUDIES
VIEW FROM ENTRY RAMP



BUILDING EXTERIOR STUDIES

VIEW OF WABAN/WALNUT ENTRANCE



BUILDING EXTERIOR STUDIES
VIEW FROM WABAN STREET



BUILDING PERFORMANCE



LEED v4.1 for BD+C: Schools

Project Checklist

all credits will follow v4.1 criteria unless otherwise noted

Y ? N
1

Credit 1 Integrative Process

1

9	4	2	Location and Transportation	15
			Credit 1 LEED for Neighborhood Development Location	15
1			Credit 2 Sensitive Land Protection	1
		2	Credit 3 High Priority Site	2
3	2		Credit 4 Surrounding Density and Diverse Uses	5
4			Credit 5 Access to Quality Transit	4
	1		Credit 6 Bicycle Facilities	1
	1		Credit 7 Reduced Parking Footprint	1
1			Credit 8 Electric Vehicles	1

8	1	3	Sustainable Sites	12
Y			Prereq 1 Construction Activity Pollution Prevention	Required
Y			Prereq 2 Environmental Site Assessment	Required
1			Credit 1 Site Assessment	1
		2	Credit 2 Protect or Restore Habitat	2
1			Credit 3 Open Space	1
2	1		Credit 4 Rainwater Management	3
2			Credit 5 Heat Island Reduction	2
1			Credit 6 Light Pollution Reduction	1
		1	Credit 7 Site Master Plan	1
1			Credit 8 Joint Use of Facilities	1

4	2	6	Water Efficiency	12
Y			Prereq 1 Outdoor Water Use Reduction	Required
Y			Prereq 2 Indoor Water Use Reduction	Required
Y			Prereq 3 Building-Level Water Metering	Required
1		1	Credit 1 Outdoor Water Use Reduction	2
2	2	3	Credit 2 Indoor Water Use Reduction	7
		2	Credit 3 Cooling Tower Water Use	2
1			Credit 4 Water Metering	1

10	21		Energy and Atmosphere	31
Y			Prereq 1 Fundamental Commissioning and Verification	Required
Y			Prereq 2 Minimum Energy Performance	Required
Y			Prereq 3 Building-Level Energy Metering	Required
Y			Prereq 4 Fundamental Refrigerant Management	Required
3	3		Credit 1 Enhanced Commissioning	6
7	9		Credit 2 v4 Optimize Energy Performance	16
	1		Credit 3 Advanced Energy Metering	1
	2		Credit 4 Grid Harmonization	2
	5		Credit 5 Renewable Energy	5
	1		Credit 6 Enhanced Refrigerant Management	1

Project Name: Lincoln-Eliot Elementary School

Date: 10/6/2022

Prepared By: Arrowstreet

5	7	1	Materials and Resources	13
Y			Prereq 1 Storage and Collection of Recyclables	Required
Y			Prereq 2 Construction and Demolition Waste Management Planning	Required
3	2		Credit 1 Building Life-Cycle Impact Reduction	5
1	1		Credit 2 Building Product Disclosure and Optimization - Environmental Product Declarations	2
	1	1	Credit 3 Building Product Disclosure and Optimization - Sourcing of Raw Materials	2
1	1		Credit 4 Building Product Disclosure and Optimization - Material Ingredients	2
	2		Credit 5 Construction and Demolition Waste Management	2

5	11		Indoor Environmental Quality	16
Y			Prereq 1 Minimum Indoor Air Quality Performance	Required
Y			Prereq 2 Environmental Tobacco Smoke Control	Required
Y			Prereq 3 Minimum Acoustic Performance	Required
1	1		Credit 1 v4 Enhanced Indoor Air Quality Strategies	2
2	1		Credit 2 Low-Emitting Materials	3
1			Credit 3 Construction Indoor Air Quality Management Plan	1
	2		Credit 4 Indoor Air Quality Assessment	2
	1		Credit 5 Thermal Comfort	1
1	1		Credit 6 v4 Interior Lighting	2
	3		Credit 7 Daylight	3
	1		Credit 8 Quality Views	1
	1		Credit 9 Acoustic Performance	1

6			Innovation	6
1			Credit 1.1 Exemplary Performance: Access to Quality Transit	1
1			Credit 1.2 Pilot Credit: Comprehensive Composting	1
1			Credit 1.3 Innovation: Design for Active Occupants	1
1			Credit 1.4 Innovation:	1
1			Credit 1.5 Innovation:	1
1			Credit 2 LEED Accredited Professional	1

2	2		Regional Priority	4
1			Credit 1 Access to Quality Transit - threshold 1pt	1
	1		Credit 2 Protect Restore Habitat (2pt), Surrounding Density (4pt), Renewable Energy (2	1
	1		Credit 3 Optimize Energy Performance - threshold 8 pts	1
1			Credit 4 Building Life-Cycle Impact Reduction - threshold 2 pts	1

50	48	12	TOTALS	Possible Points:	110
Certified: 40 to 49 points, Silver: 50 to 59 points, Gold: 60 to 79 points, Platinum: 80 to 110					

Q&A

For Further Information:

- » www.newtonma.gov/gov/building/capital_projects
- » www.lincolneliot-necp-projects.com
- » Alejandro Valcarce, AIA, Deputy Commissioner Newton Public Buildings; avalcarce@newtonma.gov
- » Vivian Varbedian, Project Manager, Hill International; vvarbedian@hillintl.com

