

NEWTON EARLY CHILDHOOD PROGRAM

STAFF PRESENTATION

NEWTON, MA
14 JANUARY 2020

**SCHEDULE OVERVIEW
PROGRAM SUMMARY
SITE PLAN
BUILDING LAYOUT AND PERSPECTIVES
PARKING PLAN**

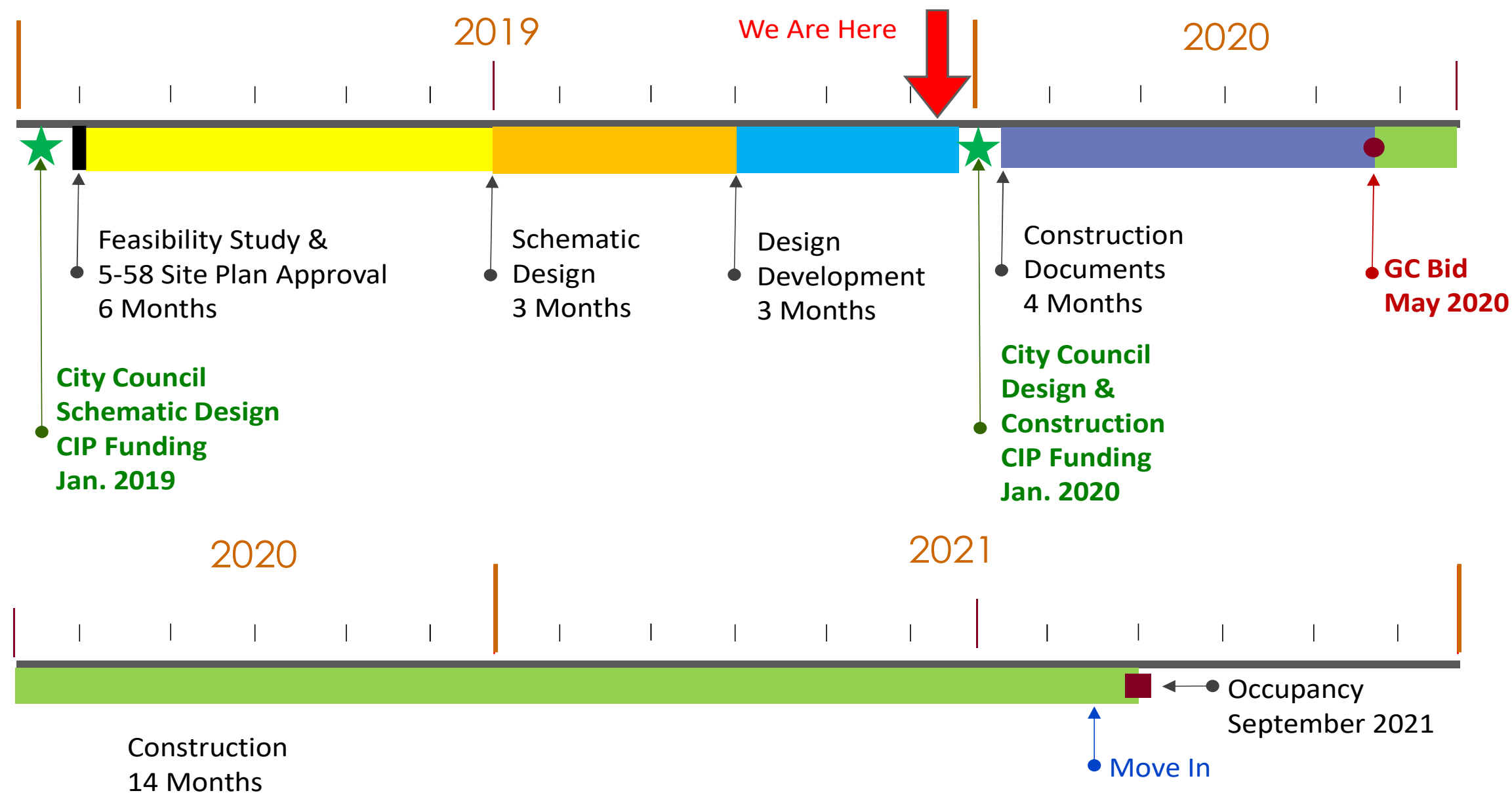


Project Schedule Overview



CITY OF NEWTON | NECP PROJECT

Project Plan & Timeline



LE-NECP DRC Meeting – December 11, 2019



Program Summary and Design Guidelines

Projected NECP at 687 Watertown Street

Exterior/ Site

- » Outdoor age appropriate playground
- » Car-centric due to nature of program
- » Vans operation: 12 - 15 Vans
- » Parent/ guardian vehicles: 45 - 65
- » Staff vehicles: 85 - 100

Building/ Program

- » Building Size: 38,000 SF on 3 levels
- » Remove modulars
- » Occupancy:
 - 305 total students (ages 2.9 to under 6 years old)
 - 104 Special needs
 - 90 Typically developing
 - 111 Related services85 - 105 Staff
- » 17 Classrooms with support spaces

Features/ Goals

- » Improve pick-up/ drop off and entry to provide access and security for families and caregivers
- » Design with regard with understanding the mobility and sensory needs of population
- » Design for inclusiveness and spaces for specialists adjacent or within classrooms
- » Create shared specialist offices to foster collaboration and sharing between teachers

SITE DESIGN UPDATES

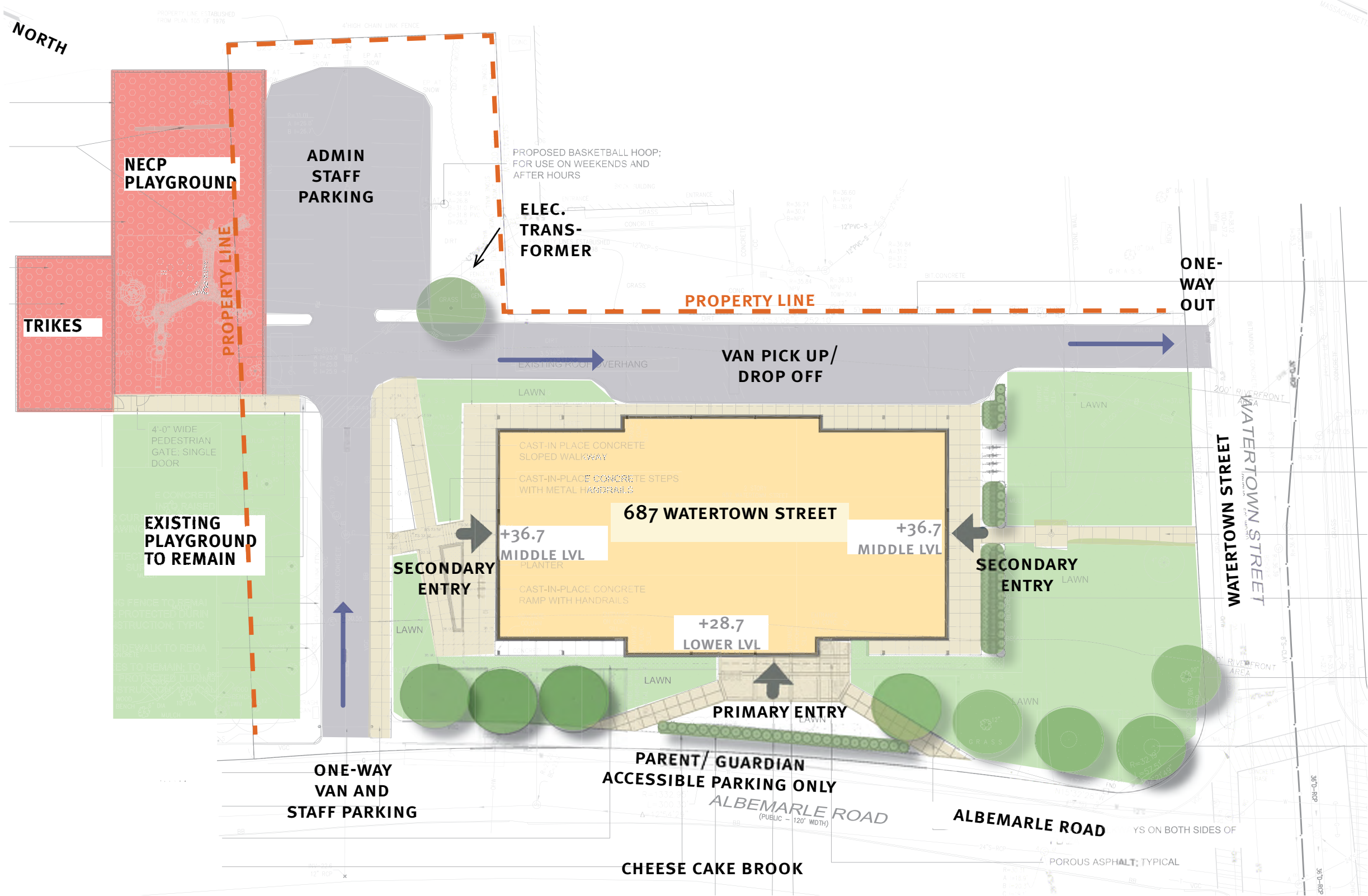
687 Watertown Street



687 Watertown Street



NECP Developed Site Plan



RUBBER SURFACING EXAMPLES

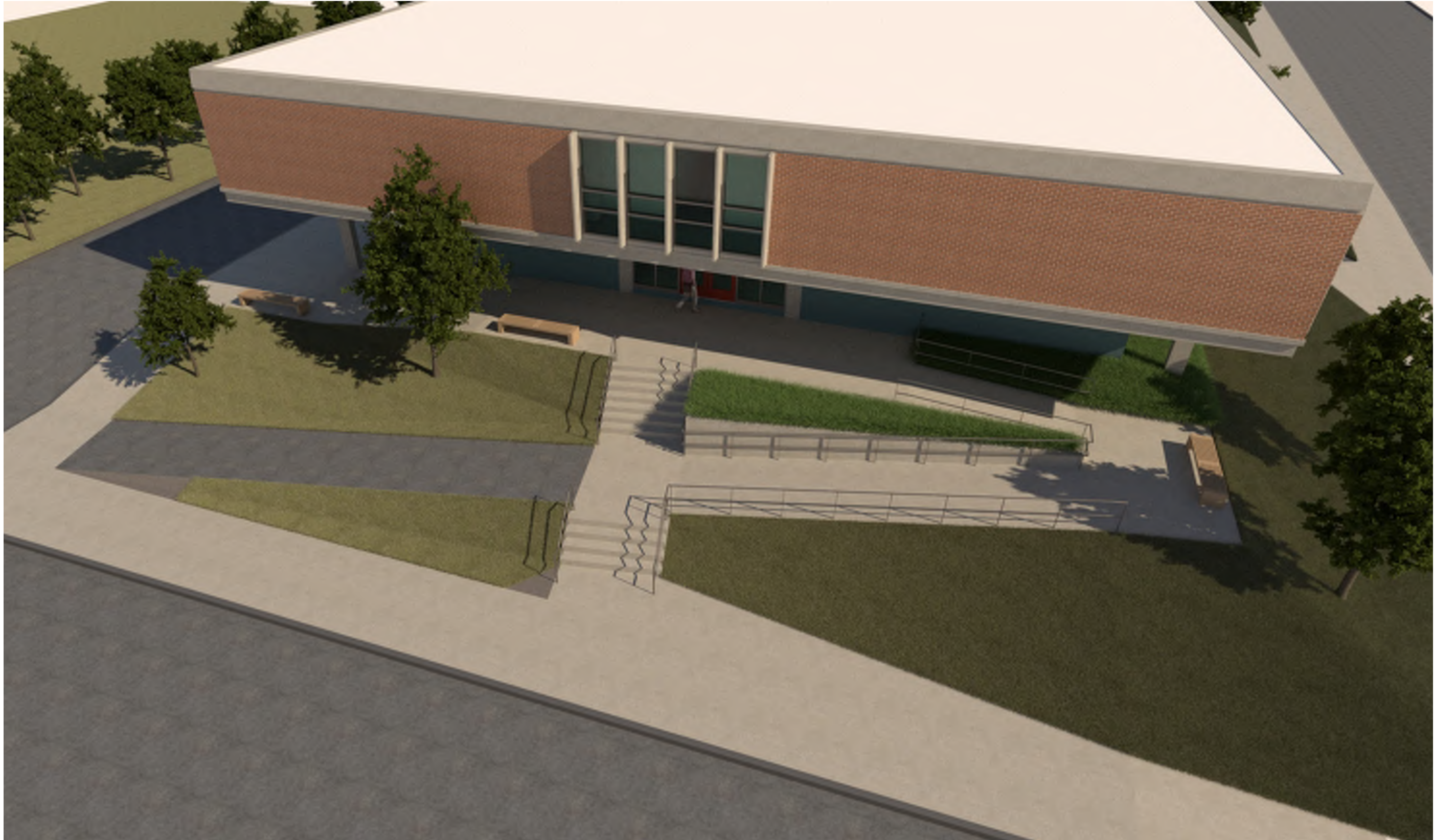


EQUIPMENT FROM 150 JACKSON



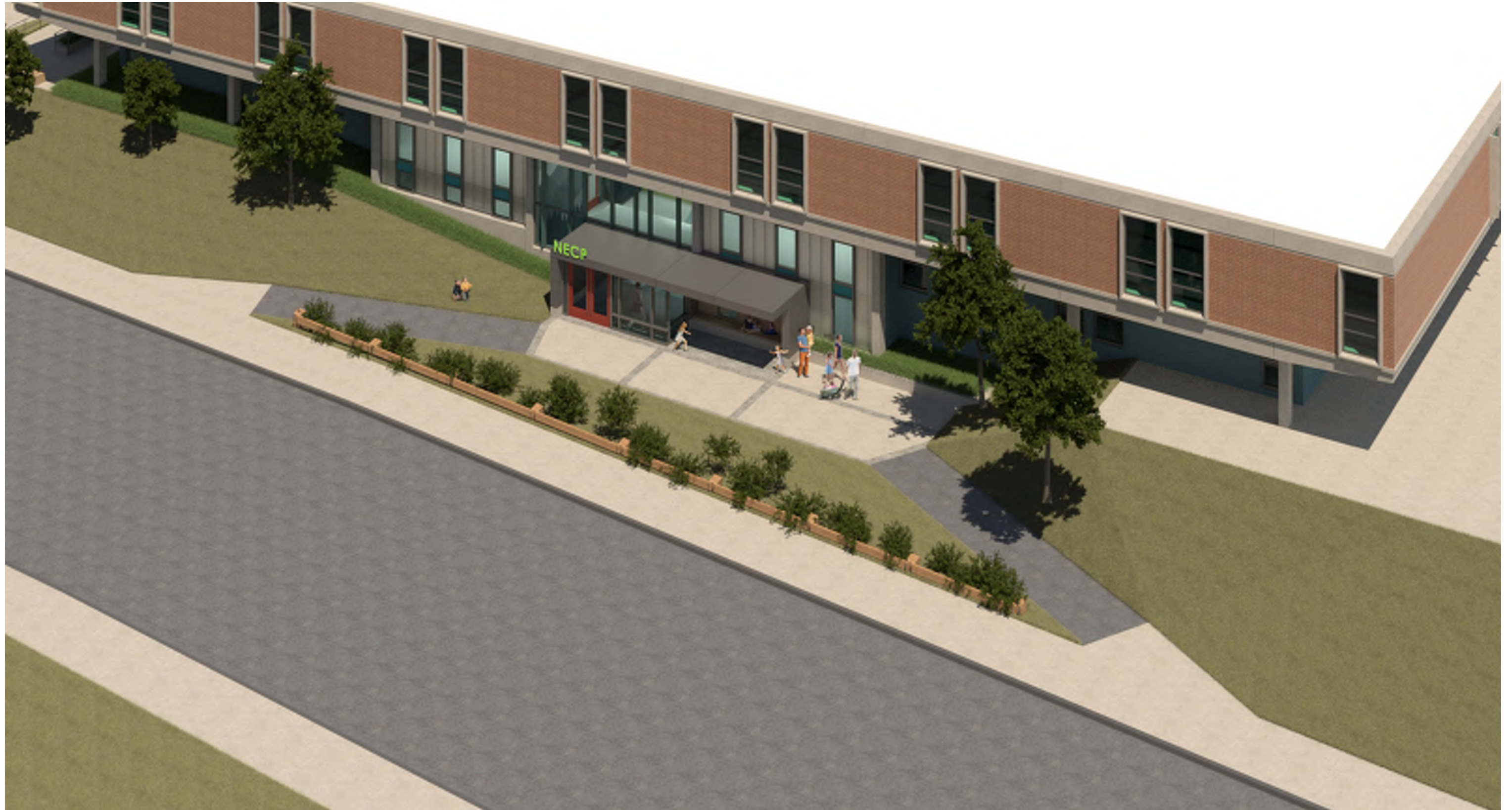
NECP

North Ramp Perspective



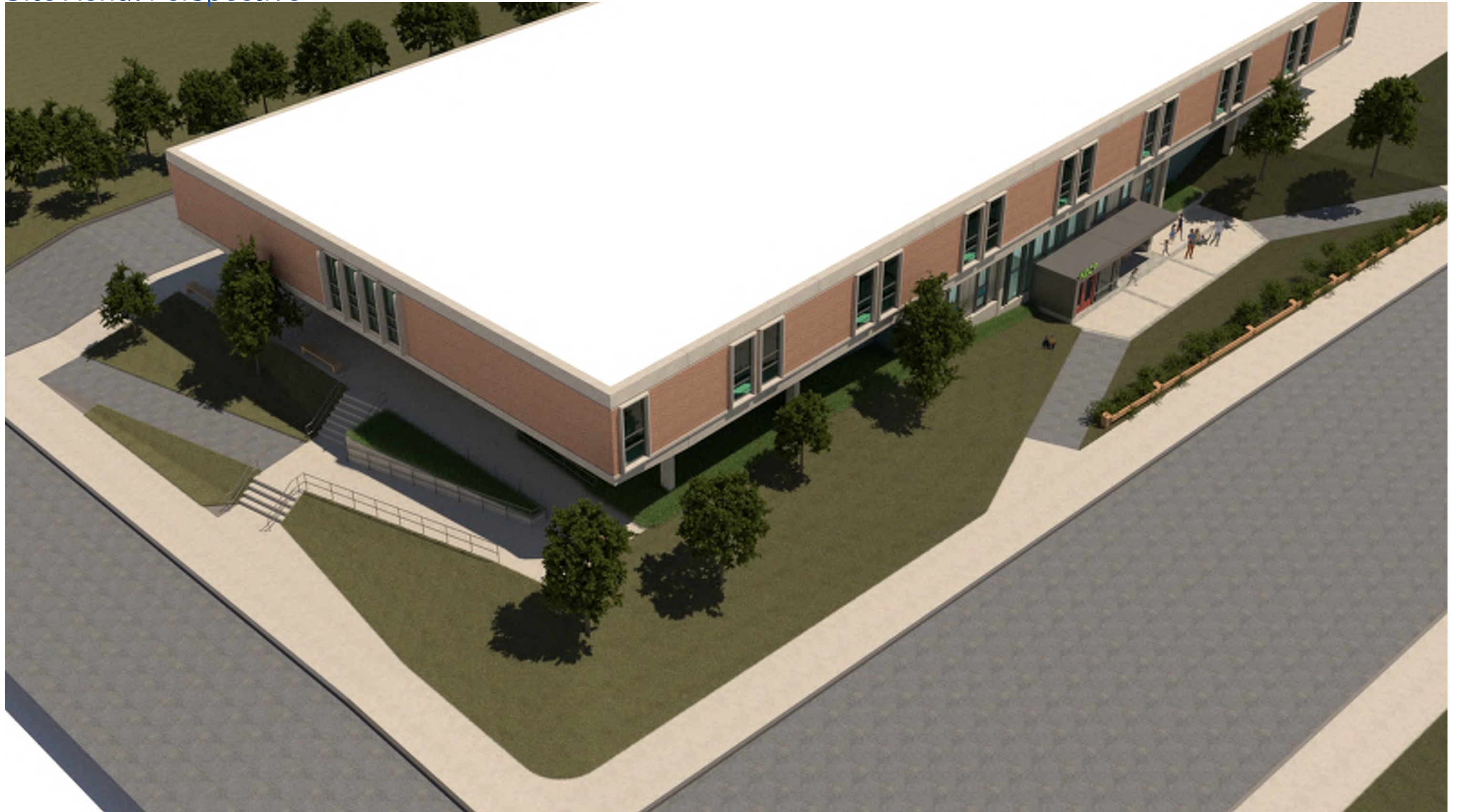
NECP

Front Plaza



NECP

Site Aerial Perspective



EXTERIOR DESIGN UPDATES

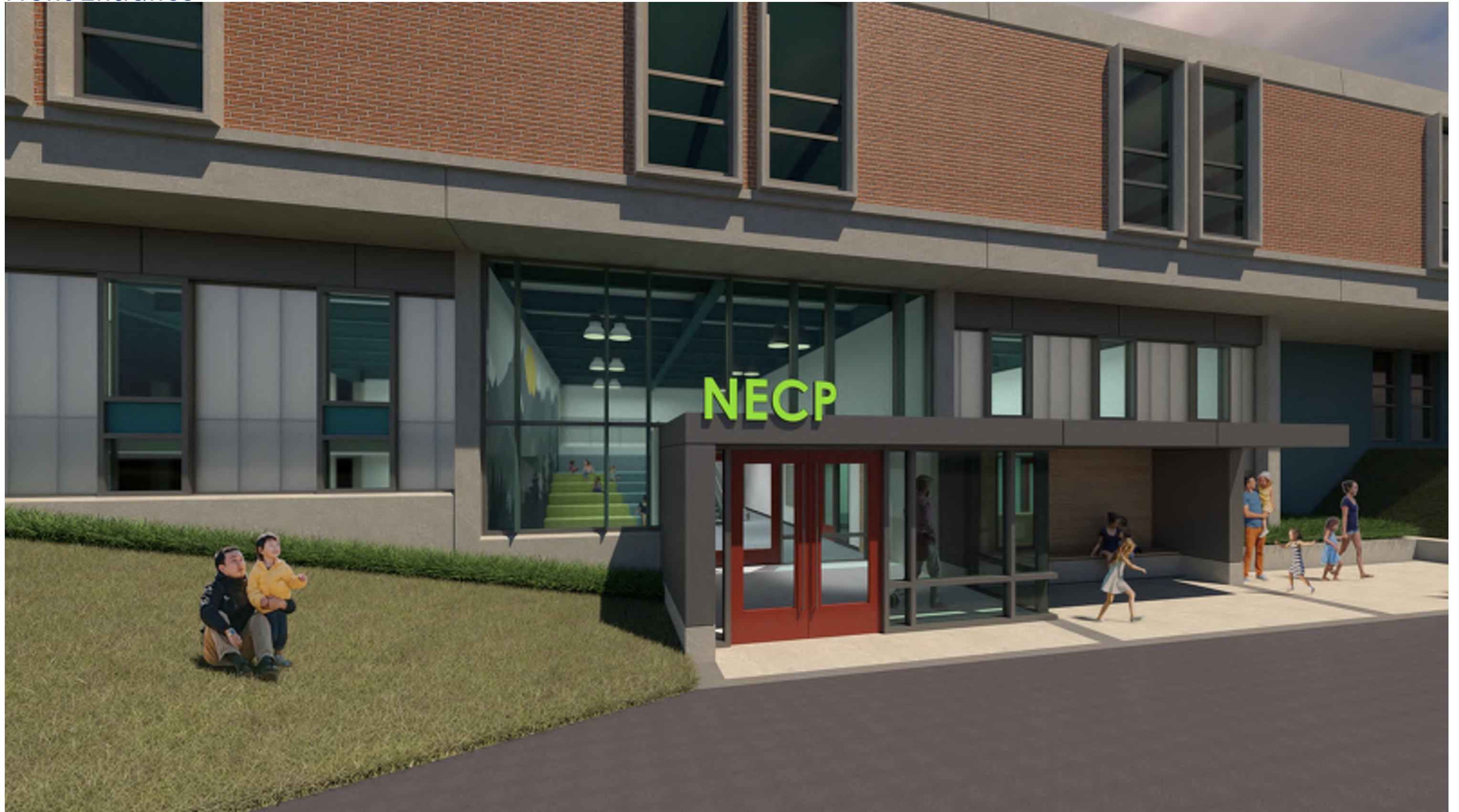
NECP

Front Entrance



NECP

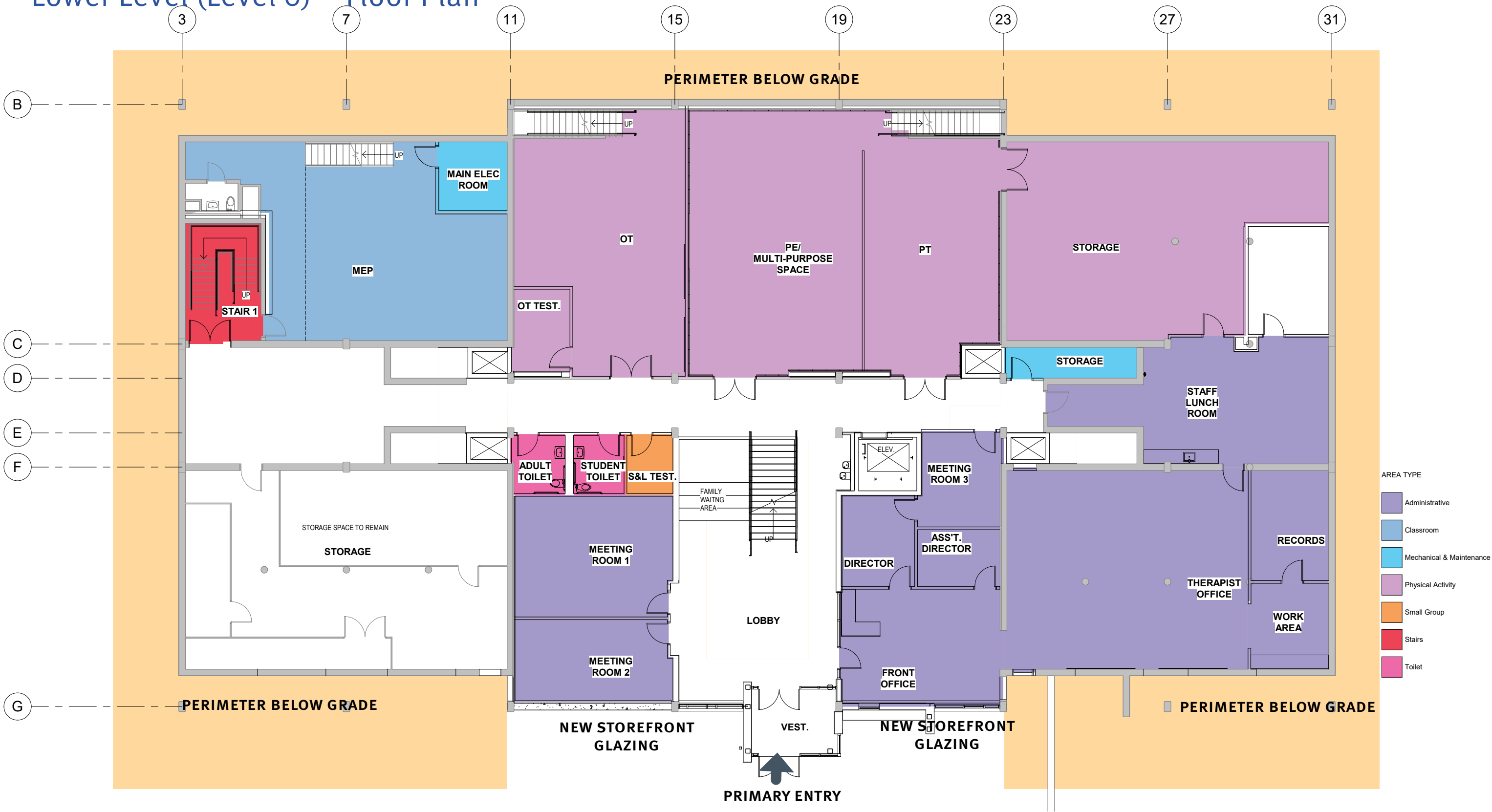
Front Entrance



INTERIOR DESIGN UPDATES

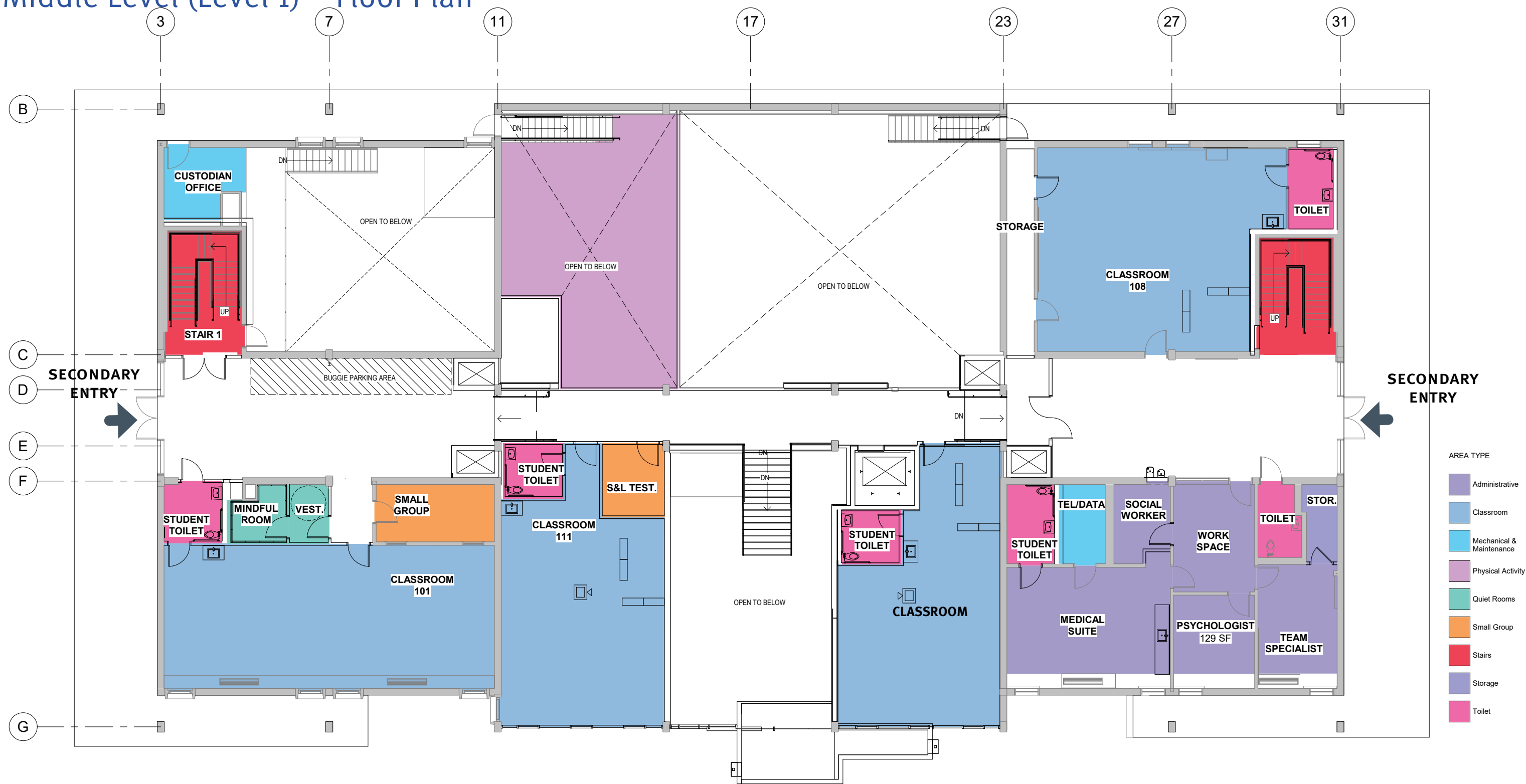
Newton Early Childhood Program

Lower Level (Level o) – Floor Plan



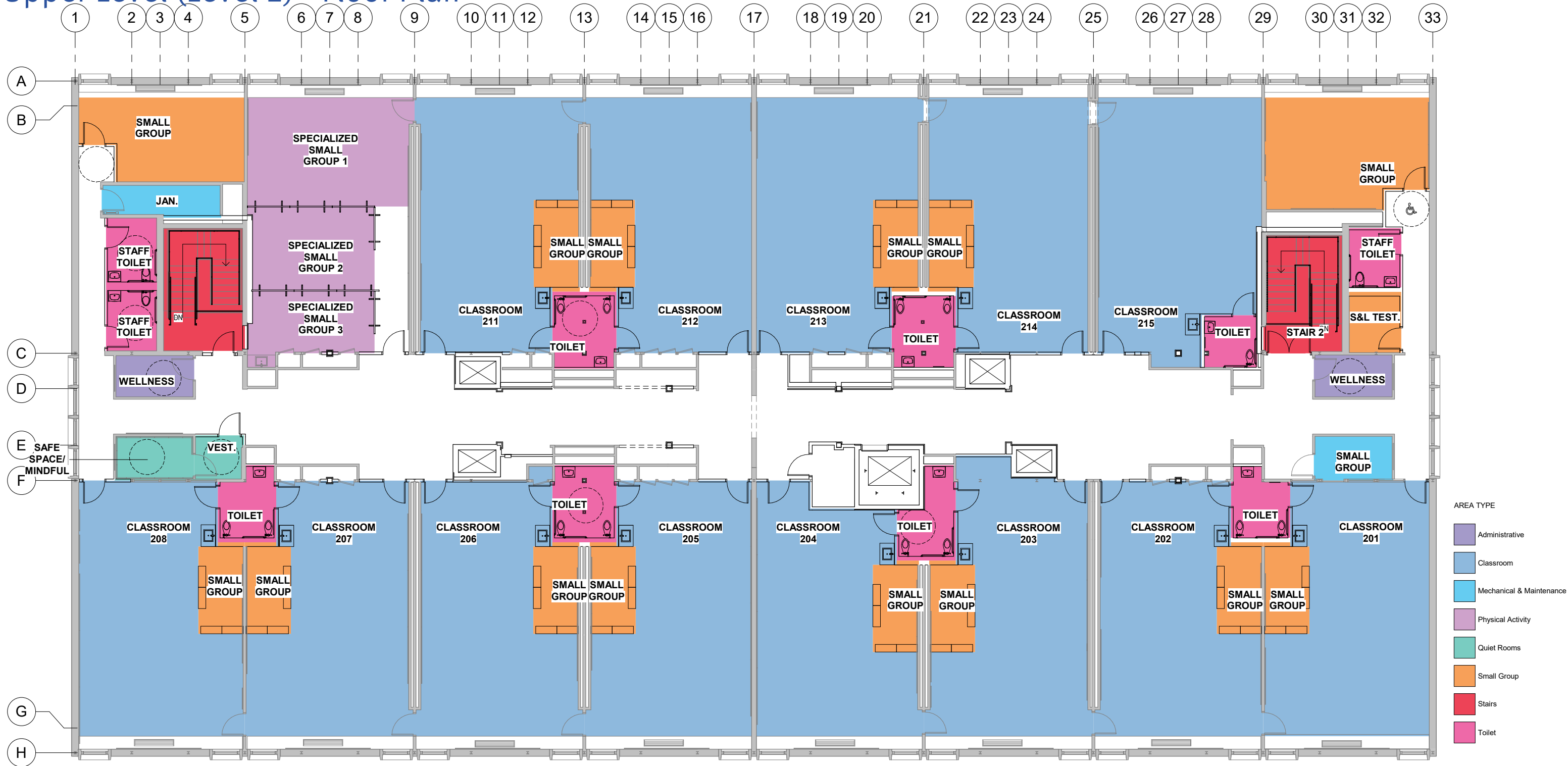
Newton Early Childhood Program

Middle Level (Level 1) – Floor Plan



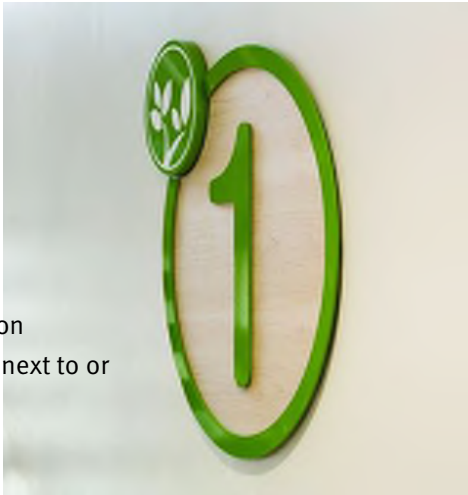
Newton Early Childhood Program

Upper Level (Level 2)– Floor Plan



Newton Early Childhood Program

Interior Graphics Precedents



simple icon
mounted next to or
on door



have color on doors
only



bring color onto floor
to serve as carpet or
"welcome mat"

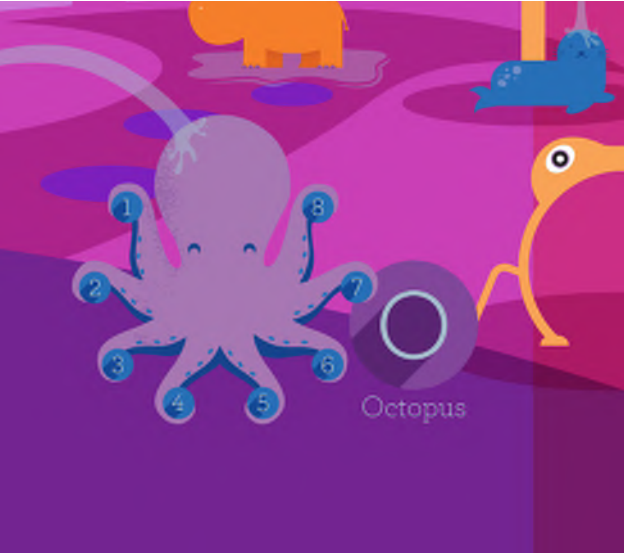


utilize symbols/icons for
wayfinding?



Newton Early Childhood Program

Interior Graphics Precedents



Newton Early Childhood Program

Upper Level Perspective



Newton Early Childhood Program

Upper Level Perspective



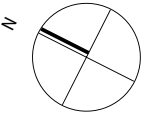
Newton Early Childhood Program

Lobby Perspective



PARKING PLAN

687 Watertown Street NECP Parking Plan



» Projected parking demand:

85 - 100 Staff

45 - 65 Parents/ Guardians

» Available parking:

(Approx. 265 total existing)

18 parking lot (Staff)

93 head in east side of Albemarle
down to Gath

72 parallel on west side of Albemarle
down to Gath

80+ parallel on Edinboro, Page,
Walker, Brookside, and
Albemarle (South of Watertown)



DISCUSSION