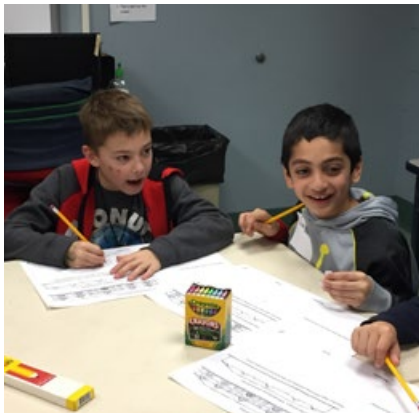


Lincoln-Eliot Elementary School and Newton Early Childhood Program

School Building Committee Presentation | October 11, 2018



ARROWSTREET

HILL
Hill International



Agenda

- » Team Introductions
- » Process and Schedule
- » Existing Conditions Observations
- » Preliminary Site Selection Criteria
- » Discussion

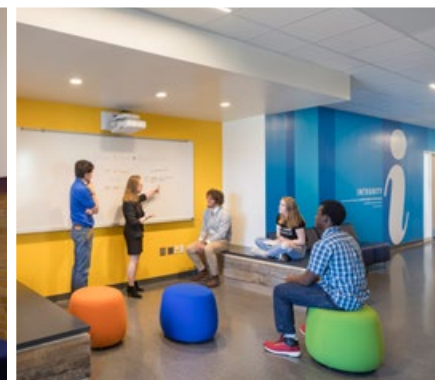


PROGRAMMED & DESIGNED OVER
500,000 SF OF PRE-K & ELEMENTARY
SCHOOL SPACES

RENOVATED OVER 385,000 SF WITHIN
ACADEMIC BUILDINGS

EXPERTISE IN DESIGNING PUBLIC
FACILITIES ON TIGHT, URBAN SITES

COMMITTED TO STAYING ON BUDGET



ELEMENTARY SCHOOL EXPERIENCE



Howe-Manning Elementary School | \$31M



Estabrook Elementary School | \$41M



Paul Revere Elementary School | \$17M



Millbury Shaw Elementary School | \$40M

ELEMENTARY/ PRE- SCHOOL EXPERIENCE



James Hill Elementary School | \$32M



Park Avenue Elementary School | \$47M



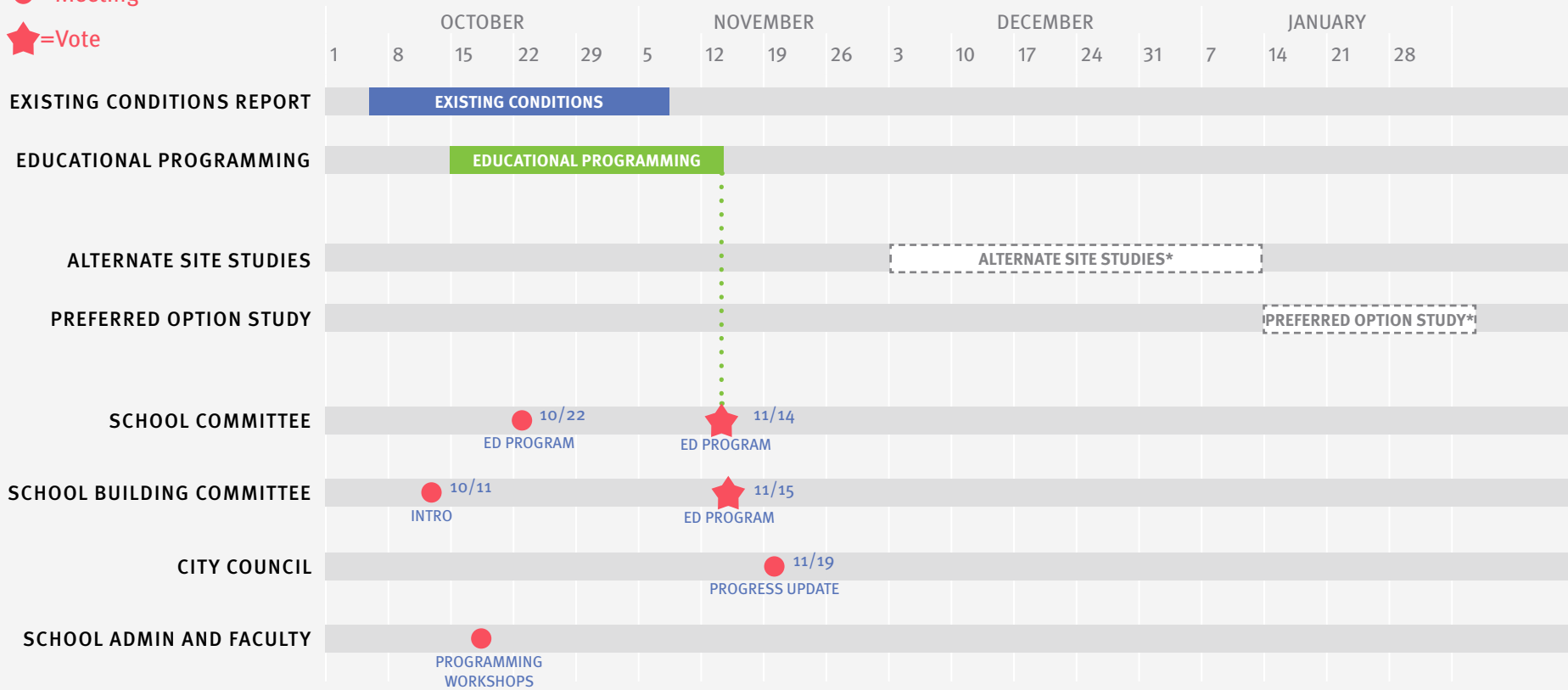
Natick High School w/ Pre-K | \$78M



AC Whelan Elementary School | \$39M

Project Timeline / Project Scope, Meetings, and Approvals

● =Meeting
★ =Vote



* = Awaiting Authorization



Educational program needs and workshops

- » Half day session with Lincoln-Eliot
- » Full day session with NECP
- » Understanding existing and proposed program needs
- » Understanding student future enrollment and demographics

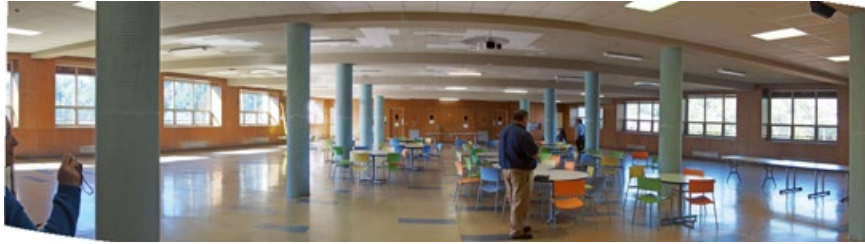
Lincoln-Eliot: +/- 450-490

NECP: +/- 200 FT and 100 PT

150 Jackson Road / Newton, MA



150 Jackson Road / Initial Building Observations



- » Good educational spaces
- » Gymnasium needed for Elementary use
- » Accessible upgrades required
- » System upgrades or replacement required
- » Finish upgrades needed

150 Jackson Road / Site Opportunities and Challenges

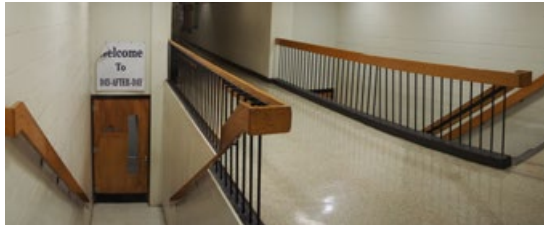
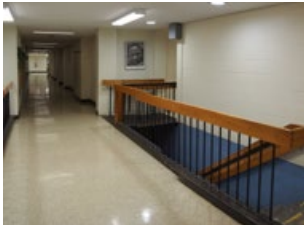


- » Large site
- » Front entrance presence
- » Play spaces and activity areas
- » Traffic and parking
- » Neighborhood concerns

Horace Mann / 687 Watertown Street, Newton, MA



Horace Mann / Initial Building Observations



- » Large classroom spaces
- » Accessible upgrades required
- » System upgrades or replacement required
- » Finish upgrades needed
- » Aged modular classrooms

Horace Mann / Site Opportunities and Challenges



- » Small site
- » Traffic, parking and pedestrian circulation
- » Drop-off and pick-up
- » Front entrance presence
- » Play spaces and activity areas

Co-locate NECP and Lincoln-Eliot at 150 Jackson Road

Pros of having NECP and L-E at 150 Jackson:

- Potential staffing reduction due to cohabitation
- Potential shared resources (i.e. conference rooms and administrative areas) may reduce upfront capital costs
- Potential for increased energy efficiency and utility savings due to cohabitation
- Potential for less total parking development due to possible dual purpose parking

Cons of having NECP and L-E at 150 Jackson:

- Both programs on the site will prove both challenging and taxing to the neighborhood
- Maintaining a safe site will prove challenging
 - 200 staff, 300 parent vehicles, 12+ vans, and school buses
 - continuous activity all day
- Space for exterior playspace and greenspace will be challenging
- Traffic and parking demands will present a challenge
- Additional costs for temporary NECP facilities during construction

NECP at Horace Mann

Pros of having NECP at Horace Mann:

- Cost savings in not having to construct additional space at 150 Jackson
- Achieving an NECP identity is much easier at HM, than if it were part of 150 Jackson
- Subject to program needs confirmation, it appears that HM has more space than the current NECP program
- The adjacent park is available for playspace and greenscape subject to safety and security considerations

Cons of having NECP at Horace Mann:

- Traffic and parking demands will present a challenge that needs to be worked out
- Exterior program spaces may require utilizing adjacent assets like Albemarle Road

Lincoln-Eliot Elementary School and Newton Early Childhood Program

Next School Building Committee Presentation | November 15, 2018

» Discussion



ARROWSTREET

HILL
Hill International

